

TARGETED STRATEGY PLAN—MCD OUTCOME 10

INTRODUCTION

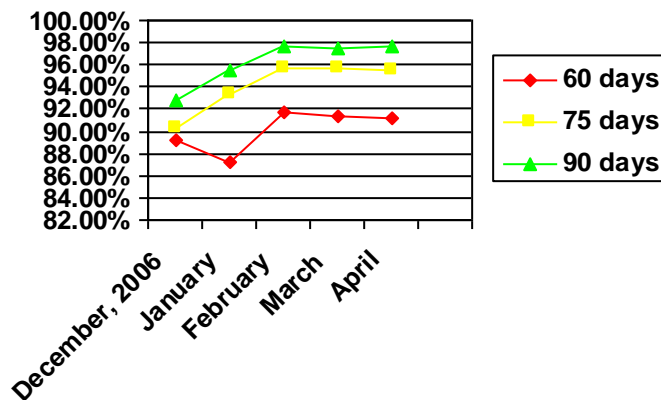
The following strategy will continue to be used to support the achievement of Outcome 10:

1. Target selected schools for assistance and accountability measures for IEP timeline oversight.

This primary strategy has been developed from an analysis of IEP timeline completion data.

PERFORMANCE

District performance for Outcome 10 during 2006-2007 has consistently and steadily improved as compared to 2005-2006. Welligent data exhibited in the Modified Consent Decree (MCD) Progress Reports from December 2006 through April 2007 for LAUSD as a whole are exhibited below. Per this data, the District is presently on target to achieve Outcome 10.



The strategy for achieving Outcome 10 this year focused on selected schools that were below 90% in completing evaluations and convening IEPs within 60 days at the end of the 2005-2006 school year. The “snapshot” report provided to Local District Superintendents in May 2007 indicated that all Local Districts except two were convening 90% or more of their initial assessment IEP meetings as defined by the Independent Monitor within 60 days. Local District 3 was close at 89.3% and Local District 7 was at 85%. All Local Districts showed growth in May 2007 over June 2006.

The monthly targeted school “snapshot” reports for Outcome 10 also indicated if schools having completed 10 or more evaluations and IEPs at the time of the report completed 98% or more within 60 days or completed less than 90% within 60 days. The May 2007 data provides profiles for the Local Districts in Table 1.

For the total group of targeted schools, 16.6% of the target schools that completed 10 or more evaluations and IEPs increased their performance from having less than 90% of their initial evaluations completed within 60 days to 98% or better. 24.4% of the targeted schools having completed 10 or more evaluations and IEPs did not achieve the 90% aim. These schools continue to receive additional monitoring and interventions.

Table 1.

Local District	No. Target Schools 10+ IEPs Completed within 60 Days => 98%	% Target Schools 10+ IEPs Completed within 60 Days => 98%	No. Target Schools 10+ IEPs Completed <90% within 60 Days	% Target Schools 10+ IEPs Completed <90% within 60 Days
1 (52 target schools)	10	19.2%	7	13.5%
2 (29 target schools)	3	10.3%	2	6.9%
3 (59 target schools)	10	16.9%	16	27.1%
4 (45 target schools)	6	13.3%	13	28.9%
5 (34 target schools)	7	20.6%	6	17.7%
6 (15 target schools)	4	26.7%	4	26.7%
7 (42 target schools)	5	11.9%	21	50%
8 (38 target schools)	9	23.7%	10	26.3%
Charter Schools (22 target schools)	2	9.1%	3	13.6%
Total (336 target schools)	56	16.6%	82	24.4%

Local District	No. Target Schools 10+ IEPs Completed within 60 Days => 98%	% Target Schools 10+ IEPs Completed within 60 Days => 98%	No. Target Schools 10+ IEPs Completed <90% within 60 Days	% Target Schools 10+ IEPs Completed <90% within 60 Days

For the total group of schools selected because less than 90% of their initial evaluations were completed and the IEPs convened within 60 days at the end of 2005-2006, the May 2007 “snapshot” report indicates that 62.8% of those same schools completed 90% or more of their initial evaluations and convened the IEP meetings within 60 days in 2006-2007.

CONCLUSION

The District showed marked improvement in 2006-2007 toward achieving Outcome 10. Outcome 10 data that includes all schools and Outcome 10 data for targeted schools point to a consistent increase in the achievement of this outcome. The regular improvement as evidenced by the data would indicate that the primary strategy used to achieve the outcome, and the activities within it including regular monitoring, appears to be working and should be continued.

The District submits this primary strategy—continued targeting selected schools for assistance and accountability measures for IEP timeline oversight—as the key strategy that will significantly impact LAUSD’s opportunity to achieve the targets identified for Outcome 10 within the year. The District’s proposed targeted strategy plan for Outcome 10 follows.

TARGETED STRATEGY PLAN
Key Strategies to Achieve MCD Outcomes
2007-2008

Approved by the Independent Monitor November 13, 2006
Amended June 15, 2007

Outcome #10: Timely Completion of Evaluations—By the end of the 2007-2008 school year:

- a. 90% of all initial evaluations shall be completed within 60 days.
- b. 95% of all initial evaluations shall be completed within 75 days.
- c. 98% of all initial evaluations shall be completed within 90 days.

An initial evaluation is any evaluation other than a District initiated three-year reevaluation. Completion means that the evaluation has been completed and an IEP meeting convened. If the evaluation or IEP meeting is delayed because of parent request or the child is unavailable for testing, the completion period shall be extended by the period of such parental request or unavailability. Beginning with the 2003-2004 school year, initial evaluations not completed within 90 days shall be referred promptly to Independent Monitor for review and appropriate action.

10-1	<p>STRATEGY: <i>Continue to target selected schools for assistance and accountability measures for IEP timeline oversight</i></p> <p>RESOURCE ALLOCATON: No additional cost</p>
-------------	---

10-1.1 *Identify by Welligent 2006-2007 end-of-year Outcome 10 data those schools that are below 90% in completing evaluations and convening IEPs within 60 days and target them for increased achievement by the end of the year.*

Accountable Personnel:

Administrator, Student Information Systems, Planning, Assessment and Research

- Develop and publish local district data reports of schools failing to achieve 90% or higher in completing evaluations and convening IEPs within 60 days.

Associate Superintendent, Division of Special Education

- Communicate with targeted school principals the requirement for completing IEPs within 60 days.
- Quarterly provide to the Independent Monitor a list of schools not making progress toward the outcome.

Support Unit Administrators, Division of Special Education

- Monitor data for targeted schools to determine if improvements have occurred and for follow-up with assistant principals and/or Bridge Coordinators if they have not.
- Continue to provide additional support to targeted schools as necessary to establish a sustainable system that supports compliant IEP procedures and timelines.

- Involve Local District Directors when schools have been provided sufficient supports and assistance and continue to fail in meeting their responsibilities for achieving compliant IEP timelines.

Local District Superintendents and Directors

- Administer progressive discipline of principals of those targeted schools where there continues to be an inability or a resistance to improving in the achievement of compliant IEP timelines subsequent to sufficient support and assistance being provided by special education support staff.

Principals

- Monitor and supervise responsible staff for the establishment of sustainable systems that support the achievement of compliant IEP timelines.

Initiation Timeline: August 2007

Progress Monitoring: 1 month intervals

Intervals	Indicators
August 2007	End of year (2006-2007) school Outcome 10 data reviewed to determine if targeted school (below 90% for 60 days) list needs to be revised.
January 2008	Quarterly report to the Independent Monitor of school below target 90% for 60 days.
April 2008	Quarterly report to the Independent Monitor of school below target 90% for 60 days.
June 2008	Quarterly report to the Independent Monitor of school below target 90% for 60 days.
July 2007-May 2008	Outcome 10 data for targeted schools. Support and assistance provided.